

the ACORN

A PUBLICATION OF THE WOODLEY PARK COMMUNITY ASSOCIATION



WWW.WOODLEYPARK.ORG
WPCADC@AOL.COM

SPRING 2006

Recap... Good Times at Woodley Park's Fall Festival

The Woodley Park Fall Festival is now a pleasant memory but the decorative Call Boxes unveiled that day remain to be enjoyed by our neighborhood. Held on the lawn of the Marriott Wardman Park, the festival featured a spread provided by the hotel's manager, Ed Rudzinski, and tasty treats from area restaurants—Murphy's, Pesto Ristorante, the Zoo Bar, and Open City. Our children delighted in the Moon Bounce provided by JBG, face painting courtesy of Aidan Montessori School, an antique fire truck from DC's Finest Firemen, and a martial arts display by the Aikido school. WPCA's young-at-heart membership enjoyed browsing tables staffed by Cultural Tourism, Metropolitan Police, Holy Land Sculptures, CERT & Peke Rescue (2 cheers for Sally MacDonald), Ellen Passman Realtor, St. Thomas Apostle Church, The Silk Road, Stanford in Washington, Unity Woods Yoga, the Woodley Park Guest House, and Zipcar.

The highlight of the day was the unveiling of the Call Boxes by Committee

see **FESTIVAL** page 3

Update on JBG Companies Construction

Since the JBG Company purchased the Marriott Wardman Park Hotel last year, WPCA has been keeping our members informed about the developer's plans for the property. JBG's latest presentation to WPCA, held at St. Thomas Apostle Hall on February 8, drew more than 120 neighbors, and members of WPCA's subcommittee on the construction also were in attendance. Our Advisory Neighborhood Commission 3C has also held informational forums for the community. Under DC law, the ANC's opinion on this project must be accorded "great weight" by the city.

JBG's plans for the Marriott call for downsizing the hotel and adding residential condominium units, for a net increase of 66 units. The Park Tower (Calvert Street) wing of the hotel and eventually the historic Wardman Tower will be converted into condos and new condos will be built at the site currently occupied by the Cotillion Ballroom. Also on the drawing board is construction of a new underground parking garage to replace the surface parking and semi-open "Cotillion" garage off Woodley Road, with a net increase in parking. The existing Park Tower garage off Calvert Street will remain as is. The loading dock—now

on the west side of the campus—will be moved to the 24th Street side and enclosed.

According to JBG, the basic parameters of the project are "matter of right" under DZ zoning law. However, applications for several curb cuts requested by the developer are subject to city review, with a decision expected in April. JBG is requesting one curb cut for access to the new underground hotel parking on Woodley Road and two more for the new residential building. Two of the hotel's existing curb cuts will be maintained and JBG will give up another one. The result would be four curb cuts on Woodley Road.

WPCA's subcommittee has much more information on the Marriott construction than can be conveyed in *The Acorn*, including: drawings of the planned development; drawings

submitted with the curb cut application; conclusions of a traffic impact study commissioned by JBG and an analysis of the results that WPCA commissioned from an independent firm; Q&A on the project; and a projection of parking availability during and after completion of the project. To request any or all of these materials, please e-mail wpcadc@aol.com. In addition to the six presentations by JBG to our community, the

see **MARRIOTT** page 7

**JBG's plans
for the
property call
for downsizing
the hotel
and adding
residential
condominium
units.**

INSIDE

3 Past Presidents'
Column



YASMIN DAVID PHOTO

4-5 Committee
News



6 News from Aidan
Montessori School



YASMIN DAVID PHOTO

7 Woodley Park
Business Association
Revitalized

BOARD OFFICERS

PRESIDENT
R.N. Jurgenson

VICE PRESIDENT
Kurt Vorndran

TREASURER
Ellen Passman

SECRETARY
Stephanie Zobay

EX-OFFICIO
Bernie Arons

BOARD MEMBERS

Stephanie Clipper
Mark Klapow
Bill Kummings
Rosemary Reed
Erin Seckso

SUBCOMMITTEES

ACTIVITIES SUBCOMMITTEE
chaired by Erin Seckso

AIDAN MONTESSORI SCHOOL
chaired by Anne-Marie Birstow

AWARDS DINNER 2006
chaired by Ron David & Ed Rudzinski

BYLAWS ADVISOR
Tony Nuland

CALL BOX
chaired by Camille Kurtz

CERT SUBCOMMITTEE
chaired by Sally MacDonald

FINANCE SUBCOMMITTEE
chaired by Ellen Passman

MARET SCHOOL
chaired by Jessica Wasserman

MEMBERSHIP MANAGER
Armen Tashdininian

OYSTER SCHOOL LIAISON
co-chaired by Margaret Ernst & Stephanie Zobay

POLICE REPORT & CRIME PREVENTION
chaired by Nelson Morais

SPEAKERS SUBCOMMITTEE
chaired by Judy Waxman

STANFORD IN WASHINGTON
chaired by Stephanie Clipper

SWISS EMBASSY RECONSTRUCTION
co-chaired by Michael Lemmon, Sally MacDonald, Roy Woodall and Stephanie Zobay

THE ACORN NEWSLETTER, EDITOR
Judy Orvos

MANAGING EDITOR
R. Nour Jurgenson

PHOTOGRAPHY
Yasmin David and Paul Orvos

THE FALL FESTIVAL
co-chaired by Ron David and Mike Lemmon

WOODLEY TRIANGLE COMMUNITY PARK COMMITTEE
co-chaired by Buffie Brownstein and Martin Murray

WPCA HOTEL PROJECT COMMITTEE
chaired by Kurt Vorndran

WPCA KIDS
chaired by Stephanie Zobay

WOODLEY PARK PROFESSIONAL & BUSINESS ASSOCIATION
Liaison, Ron David

ZOO CONSTRUCTION
co-chaired by Dia Black and David White

What is Woodley Park to YOU?

- a. Home of the National Zoo.
- b. Where those HUGE hotels are.
- c. Not a spot on a tourist map.

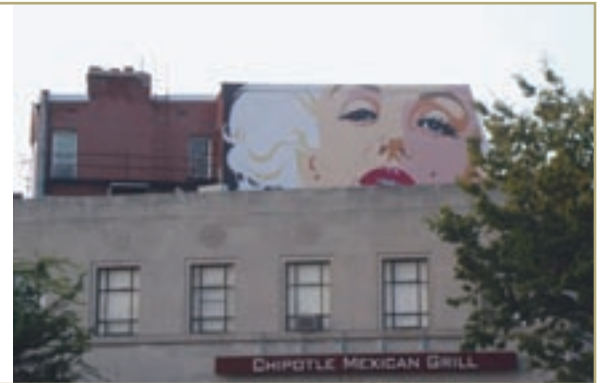


A new Coffeehouse, Diner & Bar in YOUR neighborhood.

2331 Calvert Street NW • 202.332.2331

NUTS Over Woodley Park

The Acorn welcomes your favorite Woodley Park photos. Have a great shot from a WPCA event or neighborhood landmark? Send it to orvosj@netscape.net.



WPCA

FORMER PRESIDENTS

Bernie Arons	2004-2005	Jerry Hockberg	1988-1990
Barbara Ioanes	2003-2004	Charles Warr	1985-1988
Ron David	2002-2003	Bill Schultz	1983-1985
Martin Murray	2000-2002	Lynn Heintz-Ohman	1982-1983
Sally MacDonald	1999-2000	Christopher Klose	1980-1982
Alan Blevins	1996-1999	Bill Carroll	1976-1980
Roxane Sismanidis	1994-1996	Lindsley Williams	1974-1976
John Dear	1993-1994	Neil Krucoff	1970-1974
Larry Aurbach	1990-1993		

If you have information about WPCA's past presidents or the association's history that you'd like to share, send an e-mail to wpcadc@aol.com.

The Acorn is published biannually by the Woodley Park Community Association and delivered free of charge to members. We invite your comments, suggestions and submissions. Contact *The Acorn* Editor, Judy Orvos at orvosj@netscape.net.

The Woodley Park Community Association (WPCA) is dedicated to the betterment of our historic residential neighborhood. Membership is free, and open to all Woodley Park residents and/or property owners over 17 years old who register with the Association. Woodley Park is bounded by Rock Creek to the east, Calvert Street & Cleveland Avenue to the south/southwest, 34th Street to the west, and Woodley/Klinge Road to the north. WPCA was founded in 1965 and became incorporated in 1985.

If you wish to join, please see the membership form on page 6. Or e-mail us the same information at: wpcadc@aol.com. Although there is no cost to join, we do accept donations to help defray necessary Association business costs.

All Wrapped Up Coming Unwrapped

Woodley Park residents may have noticed that All Wrapped Up, the shop at 2643 Connecticut Avenue, closed last August. What you may not know is that in January, the District issued permits to a Subway restaurant to retrofit the space. The development did not go without notice—or action by—WPCA's leadership.

The storefront in question is subject to Woodley Park's Commercial Overlay, which limits restaurants to no more than 25% of the linear footage of street-level space. That limit had been reached 2 years ago, when the DC government—through the Department of Consumer and Regulatory Affairs—mapped the Overlay. Opening another restaurant in our neighborhood would require a lengthy procedure, starting with a meeting between the applicant, WPCA, and residents of Woodley Park, and proceeding to a presentation to the ANC. The District cannot issue permits until these and other steps have been completed and neighborhood and ANC approval have been obtained.

WPCA's understanding is that the permit application for 2643 Connecticut Avenue had been in the DCRA online computer system since December, but with no mention of the restaurant as the applicant. For more than a month, Councilmember Jim Graham, the ANC, and local residents tried to obtain information about the situation. Repeated calls to DCRA produced no results, nor were calls returned. ANC Commissioners Nancy MacWood, Dia Black and Stephanie Zobay; previous ANC Commissioners Allen Hahn and Sally MacDonald; and WPCA President Nour Jurgenson and previous President Barbara Ioanes all tried to obtain information about the storefront to determine what permits had been issued and the nature of the business.

DCRA did finally respond to the ANC and issued Stop Work Orders—which can be appealed by Subway—for construction that had already begun. DCRA has agreed to remap Woodley Park to determine if the 25% limit has been reached. Be assured that WPCA values the overlay as a way to encourage a variety of retail shops and to help control our trash and rat problems. We will continue to monitor the situation with the storefront to ensure that due process is followed.

—Barbara Ioanes
WPCA President, 2003-2004

FESTIVAL *continued from page 1*

Chair Camille Kurtz, with representatives from DC's Office of Cultural Tourism and Ward 3 Councilmember Kathy Patterson. As you enjoy the Call Boxes in our area, please thank their sponsors, listed below. And a very special thanks to the organizers of the Fall Festival: Ron David, Mike Lemmon, and the Morais Family!

SPONSORS

Long & Winding Woodley Road
John, Sheila, Angelica and Maria Mooney

Fr. Walsh & Mrs. Simpson
Rosemary Reed & Michael S. Hurdelbrink

From Woodley to Woodley Park
Shapiro & Company, LLC

Redwood
Yasmin David & Family

Harry Wardman
The Aidan Montessori School

Woodley
The Maret School

Million Dollar Bridge
Nelson, Susan, Kaitlin, Matthew, Michael and Brian Morais & Stanford in Washington

Mihran Mesrobian
Mesrobian Family



Unveiling of the Harry Wardman Call Box sponsored by the Aidan Montessori School at the 2005 Fall Festival



Young residents enjoying the face painting at the Fall Festival

Woodley Park • Tenleytown • Bethesda • Ballston

Over 25 years of Yoga instruction
in the metro area.

UNITY WOODS YOGA CENTER

2639 Connecticut Ave., #C102
(across from the Woodley Park metro)

202-232-YOGA • www.unitywoods.com



Ellen Passman

Licensed in MD, DC & VA
Sales Associate

Cell: 202. 841. 5225
Office: 202. 282. 2124
Fax: 202. 362. 3164

epassman@wcanmiller.com
www.ellenpasman.com



#110 Massachusetts Ave. N.W. Washington DC 20010



AIDAN
MONTESSORI
SCHOOL



Toddler—unique toddler program for 18 - 36 month-olds.
Primary—outstanding preschool and kindergarten program.
Elementary—rigorous and comprehensive program for grades 1 - 6.

YOUR WOODLEY PARK NEIGHBOR SINCE 1996.
2700 27th Street, NW, Washington, DC 20008 • 202-387-2700

www.aidanschool.org



WPCA Kids Debuts

Our Woodley Park community is growing and so are the number of children in the area. To foster the spirit of our neighborhood in our children, WPCA is forming a new activities group, WPCA Kids. The group will plan activities designed with our children in mind, such as zoo outings, neighborhood soccer games, picnics, and movies. If you would like to be a part of this group, please contact Stephanie Zobay at szobay@yahoo.com or 202-387-6759.

—Dr. Stephanie Zobay
WPCA Secretary

Financial Committee Spearheads 5-Year Plan

Helping WPCA map its future is the impetus behind the 5-year plan being developed by the Financial Committee. We anticipate that income from memberships will cover WPCA's administrative costs and that the organization's projects will be self-supporting and/or require "seed" money from an outside source. It's important that we build up a financial "cushion" to get special projects off the ground before we can plan targeted fundraisers. We on the Financial Committee are working hard to ensure a bright future for WPCA.

—Ellen Passman
Treasurer

WPCA Membership Hits All-Time High

On December 31, 2005, WPCA reached a milestone. With more than 450 households representing 700 adults on its rolls, we marked an all-time high in membership. In addition to our net gain of 70 households since the beginning of 2005, we're also proud to count 25 businesses and organizations in the neighborhood as formal WPCA members.

Last year's membership increases were gradual, but one particular issue—proposed expansion of enrollment at Aidan Montessori School—apparently did spur about 50 of the new registrations. A number of new members also signed up at WPCA's Fall Festival. (See article on page 1 for more information on that event.)

Did you know that 85% of WPCA's registered households have e-mail addresses and 25% of our members are apartment dwellers? Those are just some of the statistics our Committee regularly reviews, with the help of the database authorized by the WPCA Executive Committee 5 years ago. Thanks to our automated system, we have a reliable and regularly updated mailing list. And we can identify WPCA members during meetings at which votes might be cast.

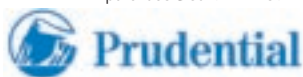
Contributions from members, both financial and via active participation in WPCA projects, are the lifeblood of our organization. Donations to WPCA have enabled the organization to commission expert reviews of proposed expansion and rezoning by local businesses and other private organizations, and to design cooperative agreements regulating this growth. Your donations also make it possible for WPCA to keep DC agencies informed about neighborhood problems such as traffic and street light outages, to develop historical material about Woodley Park, and to sponsor walking tours and a house tour. Our organization's recent special projects have included maintaining the Marilyn Monroe mural, celebrating the return of the Taft Bridge lions, and surveying police/fire boxes in Woodley Park as part of a citywide program to use the boxes for informational or cultural purposes. Read the Activities Committee's report on the opposite page for an update on WPCA's latest tree-planting efforts. Our Web site—<http://www.woodleypark.org>—is an ongoing source of updates, and we have an e-mail list to provide timely updates on issues that affect all of us, such as crime, and to disseminate information on participating in non-WPCA activities in our area.

WPCA is now recognized and respected by DC government officials as the voice of Woodley Park. To help keep that voice vital and fresh, we welcome new members. To join, simply fill out the membership form on page 6 of this issue. We ask that all members reregister annually to ensure that our database remains current. If you are already a WPCA member, you can find your membership expiration date on the mailing label of The Acorn.

—Armen Tashinian
Membership Manager

FINANCE COMMITTEE

Kathy Purchase
REALTOR®. Licensed in DC, MD, VA
kpurchase@earthlink.net



Carruthers REALTORS®

5025 Wisconsin Avenue NW
Washington, DC 20016
Cell 202 441-8850 Fax 202 462-7015
Office 202 362-3400 x120

An independently owned and operated member of Prudential Real Estate Affiliates, Inc.



Manhattan Market
2647 Connecticut Ave., N.W.
Washington, DC 20008
Phone 202 986-4774
Fax 202 986-4489



Ghennet Ghebrecristos

Activities Committee Needs Treekeepers

The WPCA Activities Committee is working on a full slate of programs for 2006, from fostering the greening of our neighborhood by becoming a DC TreeKeeper Community to sponsoring a "Screen on the Marriott/Woodley Green" for movie-viewing under the stars. Our first priority is care and feeding of the young trees donated by the Casey Tree Foundation that were recently planted, and one with which we need your help.

Last summer, the WPCA Board entertained a proposal for Woodley Park to become a DC TreeKeeper Community through local non-profit DC Greenworks. Now we need at least seven residents of Devonshire Place to commit to "adopt" the trees on that block. Because WPCA is paying for the DC Treekeeper membership, it will cost you nothing except your time and use of your water spigot, and even some basic supplies will be provided free of charge.

DC TreeKeeper Communities are groups of seven to 20 households living on the same block that join together to care for all of the trees on their street for 1 year. DC Greenworks supplies Treegator watering devices for all of the trees and gives a free treecare workshop to the residents who

sign up for the program. WPCA members who join the DC TreeKeeper efforts also will receive DC Greenworks' seasonal newsletter, *The Leaf*, in the mail.

Devonshire Place was selected as WPCA's TreeKeeper block because it has the most newly planted young trees. Our thanks go to Buffie Brownstein of the Casey Tree Foundation for helping us make that determination through the wonderful colored maps of tree locations that she supplied to the Activities Committee, to Liz Tylander of DC Greenworks for information on the program, and to WP's own Kevin Johnson for putting together a flyer, which was passed out to residents of Devonshire Place.

According to Devonshire Place resident and TreeKeeper Erin L. Seckso, the first "Meet and Mulch" on the block, held last November, was a great success and there are many perks to the TreeKeeper program. "The most important," Erin said, "is education on how to care for our community trees. I thank the volunteers who came out in November and hope to see their faces and others come spring, when we place TreeGators on our young trees."



Sarah Goggin, Katy Marquardt and Liz Tylander at the "Meet and Mulch" on a beautiful November day.

Watch the WPCA listserv and Web site for announcements about upcoming TreeKeeper events and visit our site: <http://www.dcgreenworks.org> for more information on the program. If you'd like to sponsor a tree or be a tree-watering volunteer, please contact Erin at eseckso@yahoo.com or 202-912-6520. And don't forget to thank our WPCA Board members for approving such a wonderful project that will help continue to keep Woodley Park green!

Continuing Construction at Swiss Embassy

Installation of new sewer pipes on 29th Street is anticipated to be relatively painless for the neighborhood, thanks to collaboration between the WPCA Swiss Embassy Committee and key constituents. The Committee brought together area residents, embassy liaisons and engineers, and representatives from the DC Water and Sewer Authority, the Public Space, the DC Department of Transportation/Public Space Management, and the City Council. The result: an agreement by all parties that no trees will be cut nor will the sewer work impinge on residents' landscaped yards.

Our thanks go to area residents Roy Woodall, who shared his extensive knowledge of the 29th Street sewer lines, and Mike Lemmon, who made good recommendations about the Swiss Embassy's landscaping, which will influence the future "look" of the building. In addition to Roy and Mike, who are new members, the Committee includes ANC3C-03 Commissioner Stephanie Zobay and former ANC Commissioner and former WPCA President Sally MacDonald.

The embassy's liaison to the WPCA Committee is Counselor Martin Von Arx, who has been most responsive. The ambassador, the embassy and the Swiss government have charged him with addressing any and all issues related to construction of the ambassador's new residence until the project is complete. WPCA welcomes his input and all of us on the Swiss Embassy Committee continue to learn much about city regulations through our collaboration.

Triangle Park Update

Did you know that Triangle Community Park at 29th & Woodley Road is getting a "facelift"?

The Friends of the Woodley Triangle Community Park, a subcommittee of the Woodley Park Community Association, has been working with the Department of Parks and Recreation to improve our city park. The design for the park renovation is courtesy of Erika Braddock, a landscaper & Aidan Montessori parent, who donated her considerable professional talent. Our good friends at Casey Trees have agreed to provide us with some beautiful young saplings that we will plant on Sunday afternoon, March 26. And we're grateful to Jon Young, the groundskeeper at the Maret School, who is helping us prepare the park for Spring planting on Saturday, April 22 (Earth Day). We'd love to have you help on either or both days, by emailing us at wpcadc@aol.com.

—Buffie Brownstein & Martin Murray
Park Subcommittee Co-Chairs

Are you a WPCA Member?

If not, register now — membership is FREE!

Annual Membership Registration Form

NAME(S)	
STREET ADDRESS	
E-MAIL	HOME TELEPHONE
AREAS OF INTEREST / CONCERN	
SIGNATURE	
DATE	

To help with expenses, contributions are welcomed and tax-deductible. WPCA is a non-profit 501(C)3 organization. By including your e-mail address, you will receive timely updates regarding neighborhood news and WPCA meetings. Our mailing list is kept confidential.

CONTRIBUTION \$10 \$15 \$25 \$50 \$100 Other _____

Please make checks payable to: **Woodley Park Community Association**

Return to: WPCA, Membership Desk, P.O. Box 4852, Washington, D.C. 20008

Sign Up For Emergency Training

In April, Woodley Park residents will have an opportunity to brush up on their skills for responding to emergencies in the community. Community Emergency Response Team (CERT) training, through the DC Citizen Corps, is coming to our neighborhood. The 16-hour course covers topics such as recognizing and preparing for hazards that threaten personal, family, and community safety; steps to take to prepare for a disaster; and how to reduce fire hazards in the home and workplace. The Woodley Park sessions are scheduled for April 11, 13, 18, 20, 24, and 26. For more information on the CERT training, call Angela London at 202-727-7925 or WPCA CERT representative Sally MacDonald at (202) 797-8467 or e-mail sn3macd@aol.com.

NEWS from Aidan Montessori School

Dear Neighbors,

We hope you are enjoying this winter as much as the children are enjoying all the opportunities for outdoor play. This is always a busy season, as the school year is in full swing, so I want to give you an update on happenings at Aidan Montessori School. Most importantly, you have probably noticed that we are continuing the traffic plan that was implemented in September. By greatly staggering the arrival and dismissal times for different classes, we have been able to almost eliminate any vehicle queuing on 27th Street. In addition, our traffic control officer is stationed outside the school at both the noon and 3 p.m. dismissals.

Like you, we are paying close attention to the development project at the Marriott hotel, and we will be monitoring the impact on the school and the children.

Here are upcoming Aidan Montessori events that might be of interest to you as a neighbor:

March 20-24 — Spring break April 21 — Earth Day neighborhood clean-up
May 4 — Evening of the Arts June 9 — Last day of school
May 5 — Special Persons Day

Please join us on Thursday, May 4, for our annual Evening of the Arts. The children's art will be on display, we will be serving up some delicious food, and performers will provide entertainment on the playground. Evening of the Arts is a great opportunity to visit the school and meet some of our families. As spring approaches, we also hope that your children will enjoy the playground, which is open to the neighborhood on weekday evenings and weekends.

Finally, many of you may have heard that we are looking for new space. While we love our home in Woodley Park, we have simply outgrown our space here. We are continuing to search for a new home, but the vigorous real estate market in D.C. means this may be a difficult process.

As always, please feel free to contact me to talk about Aidan or other happenings in the neighborhood. I can be reached at 202-387-2700, or via e-mail through my assistant, Erica Mitchell, at Erica.Mitchell@aidanschool.org.

Sincerely,
Kathy Minardi, Aidan Montessori School

Workshops for new parents and parents-to-be and tickets for a children's show are on tap courtesy of WPCA's friends at Aidan Montessori School.

Aidan's "New Life" program for expectant parents and parents with newborns is held on Wednesdays from 1:15 to 2:45 p.m. at St. Thomas Apostle hall. The cost per session is \$20 and topics range from "How Babies Talk" to "Issues of Toileting." Children are welcome.

The school also is offering tickets to a production of "Peter Pan" performed by children in grades 1 to 6. The show will be held the evening of April 7 at the National Zoo Visitor's Center.

For more information on the workshops or the theater program, please call the Aidan Montessori School at (202) 387-2700 or e-mail Kathy Minardi at k.minardi@aidanschool.org.

—Kathy Minardi
Aidan Montessori School

Woodley Park Business Association Revitalized

The Woodley Park Professional and Business Association (WPPBA), which is being organized at the urging of WPCA President Nour Jurgenson, has been generating a lot of interest along Connecticut Avenue in the wake of its very successful Fall Festival Kickoff and the joint Holiday Reception hosted by WPPBA's first member, the Marriott Wardman Park Hotel.

"The festival was a great way to show participating businesses that we want them to think of Woodley Park as more than just an address. This is a vibrant community of nearly 7,000 residents who are interested in supporting all their neighbors," said Ron David, WPPBA organizing co-chair. "I have been very pleased with the response."

David has been holding organizational meetings with a core group of local businesses to help get WPPBA under way. The organization ultimately will be self-supporting. Stephen McKinney, owner of the Zoo Bar Café, is serving as WPPBA's organizational manager until officers are elected in the Spring.

Initial Membership in WPPBA has been set at \$100 per year for storefront establishments and \$50 for professionals. "We didn't have to charge a fee to prospective members for participating in the Fall Festival," said David, "because Ed Rudzinski, General Manager of the Marriott Hotel, provided everything we needed to help get the ball rolling, and JBG, the hotel's new owner, spent several hundred dollars on promotion and signage. It was a wonderful way for many businesses and restaurants to reach out to new clients and customers," he continued. "The event was free to everyone. It won a lot of praise. We will almost surely hold another similar event next year."

To date, the following businesses have made commitments to join the Woodley Park Professional and Business Association:

- The Marriott Wardman Park Hotel
- JBG Companies
- Open City
- Murphy's of DC
- Stanford in Washington
- Pesto Ristorante
- Salon Roi
- Aidan Montessori School
- Oki-Aikikai Aikido
- Cultural Tourism DC (CT/DC)
- Ellen Passman — realtor for W.C. & A.N. Miller
- Therese and David Cox — realty team
- The Woodley Park Guest House
- The Cathedral Care Pharmacy
- The Zoo Bar Café
- The Silk Road
- Unity Woods Yoga Center
- Zipcar
- Dawn Patrol Productions

For more information about these businesses and professional organizations, visit the WPCA Web site at <http://www.woodleypark.org>

With the recent purchase of the Woodley Park Marriott, we are looking forward to a long and mutually beneficial relationship with the Woodley Park Community.



THE JBG COMPANIES

4445 Willard Avenue, Chevy Chase, MD 20815
(240) 333-3600 • JBG.com

MARRIOTT *continued from page 1*

developer also has set up a Web site—<http://www.wardmanparknews.com>—to provide us with information.

WPCA members with questions about the Marriott project should contact me at wpcadc@aol.com.

—Kurt Vorndran
WPCA Vice President

EXPERIENCE COUNTS.



Let 20 years of Sales & Marketing work for you.

Tamora Ilasat
Senior Housing Specialist
Licensed in DC, MD, VA

Call Tamora direct @ 202-460-0699 or
office @ 202-944-8400, x226.
tamora@longandfoster.com



1680 Wisconsin Ave., NW • Washington, DC 20007





*THE PROTESTANT EPISCOPAL
CATHEDRAL FOUNDATION*

Washington National Cathedral
Beauvoir School
National Cathedral School
St. Albans School
Cathedral College



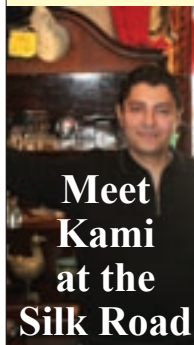
EXTENDS WARM WISHES
TO OUR WOODLEY PARK NEIGHBORS THIS AUTUMN

Massachusetts and Wisconsin Avenues NW www.pecf.org

**The
Silk
Road**

**From the
Oldest
Trade
Route
In The
World
to your
Home in
Woodley
Park.**

**Discover
a virtual
bazaar of
exotic
treasures
at the
Silk Road
2627
Conn Ave.
319-1616**



Neighborhood News

Metro Elevator Construction

If you travel the Metro, please be aware that the passenger elevator at Woodley Park is out of service for a rebuild and will not be operational again until some time in May. The delay in completion of the work is unfortunate, given the many travelers and visitors to our neighborhood who use the elevator for baby carriages, luggage, etc. WPCA will keep tabs on the repairs and update you as the work proceeds.

Stanford Announces Dinkelspiel Awards

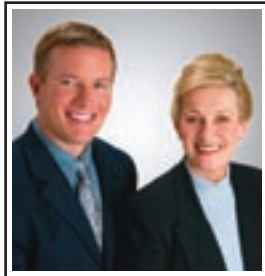
The winners of the 2006 Lloyd W. Dinkelspiel Award have been announced by Stanford University. The award, named for the man who served as president of Stanford's Board of Trustees from 1953 to 1958, recognizes distinctive contributions to undergraduate education or the quality of student life at Stanford.

This year's recipients are Sarala V. Nagala, a senior in the Public Policy Program; H. Jazmin Quill, lecturer in the Psychology Department; Vivian Fu-Ning Wang, a senior in the Management Science and Engineering Department; and Adrienne Jamieson, the Mary Lou and George Boone Centennial Director of the Stanford in Washington Program. Please join us in congratulating the awardees.

—David White



Alexander Lemmon, a student at Aidan Montessori School, plays a piano prelude to open WPCA's September 13, 2005 General Membership Meeting.



THE COX & COX HOMES TEAM

Serving DC, MD & VA

Direct: 202-237-8007
Fax: 202-318-7575

THERESE COX - M: 202-365-8139
Therese.Cox@LongandFoster.com

DAVID COX - M: 202-365-8138
David.Cox@LongandFoster.com

www.CoxandCoxHomes.com



Chevy Chase / Uptown Office
4400 Jenifer St., NW, Wash., DC 20015
Office: 202-364-1300 x 6315

STANFORD IN WASHINGTON

Our extension — the Sant Building and Garden — will house an art gallery with exhibits from Stanford and its Cantor Art Museum. The gallery and garden will be open to the community. Thank you for your patience and support.



WWW.WOODLEYPARK.ORG

E-MAIL WPCADC@AOL.COM

**UPCOMING
events**

WPCA Official Special Meeting
Wednesday, April 5 at St. Thomas
Apostle Church, 2665 Woodley Road

**WPCA Executive
Committee Meeting**
Wednesday, April 12

**WPCA Executive
Committee Meeting**
Wednesday, May 10

General Membership Meeting
Thursday, May 11



WOODLEY PARK
COMMUNITY ASSOCIATION



PO Box 4852
Washington, DC 20008

