

the ACORN

A PUBLICATION OF THE WOODLEY PARK COMMUNITY ASSOCIATION



WWW.WPCAONLINE.ORG
WPCADC@AOL.COM

FALL 2015

WPCA General Membership Meeting Is on Monday November 2

The Woodley Park Community Association will hold a general membership meeting on Monday November 2 at 7:30 pm. Our guest speakers will be the honorable Mary Cheh, our Ward 3 Councilmember, and Eli Hoffman Community Action Team Coordinator for Wards 2 & 3 Office of Family and Public Engagement of DC Public Schools Office of Family and Public Engagement.

The agenda will also include the election of officers and Executive Committee members for the next year and an update on our upcoming holiday party.

The meeting will take place at Stanford University, 2661 Connecticut Ave. All are welcome.



JBG Meeting on Wardman Tower Development Impact on Woodley Tree Canopy

JBG held a community meeting on September 9th to give an update on the Wardman Tower condo development project with a particular focus on the impact of construction on the trees and green space. There were three JBG presenters and about 20 community attendees.

The meeting was requested by the Woodley Park community through ANC Commissioner Gwen Bole in reaction to the removal of 16 "special" trees (larger mature trees requiring permit to remove) along 24th St and Connecticut Ave across from the Woodley Park metro stop. The effect of this removal was dramatic and will change the character of the Wardman property until the new landscaping matures. We learned that the replacement trees will be two to six inches in diameter so that there will be at least a 10-year period before the landscaping begins to look mature.

Members of the community asked that JBG provide a more specific plan (none was provided at the meeting) of the replacement trees and JBG responded that this was submitted during

the historical review and should be available somewhere online. JBG did say that it was going to plant 113 new trees (maple, beech, pine and oak) and 1000 new shrubs. JBG also said that there would be six feet of soil placed over the top of the garage before planting. Planting is scheduled for the Spring.

The community also asked for a recap of the approval process that JBG engaged in prior to cutting down the tree canopy on the Connecticut Ave/24th St side of the Wardman. JBG reported that it had participated in one or two ANC meetings and two hearings with the Historic Preservation Review Board and got approvals through DDoT Urban Forestry. JBG did remark that the approval was given two years ago and that it has learned that it should inform the community again when there is such a long time lag. JBG did pay into the "tree fund" for the tree removal permits (more than \$32,000). The tree fund is intended to maintain trees around the District and has in past budgets been zeroed out for other purposes.

At the end of the meeting, JBG men-

tioned that there will be further tree removal along Woodley Rd near the hotel exit driveway. These trees will be taken out to allow for a large water drainage (rain collection) area.

JBG is the company that developed the large new The Woodley apartment building on Woodley Road next to the Marriott Wardman Park Hotel. The community pointed out that JBG removed mature trees for that project and the landscaping for this new building is minimal and one-third dead. JBG said that it sold the property and is no longer responsible. It also reported that when 75% of the Wardman Tower condos are sold the condo association and not JBG will be responsible for the property.

The Wardman Tower will not have its own swimming pool and will share with the hotel.

JBG complied with all the rules, but this raises the question whether, in this time of unprecedented building and development in the District, the city has the right rules in place.

Jessica Wasserman

WPCA's MISSION

To maintain and advance the quality of Woodley Park as an in-town, generally residential community; to preserve and enhance the social, physical and historic characteristics of the neighborhood and historic places within and adjacent to it; to provide a forum for exchange of information and discussion of issues relevant to the area; and to represent residents before governmental and other entities.

Any resident of the neighborhood may join WPCA, as may the operator of any neighborhood business that provides goods or services to Woodley Park residents.

EXECUTIVE BOARD

President :: Peter Brusoe

Vice President :: Barbara Ioanes

Secretary :: Yoni Gedan

Treasurer :: Warren Gorlick

Board Members :: Dan Dembkowski,

Bill Kummings, Gasper Magallanes,

Rob Meisnere, Sarah Taber,

Stephanie Zobay

Past President :: Bill Menczer

THE ACORN

:: Editorial Board ::

Peter Brusoe, John Goodman
& Barbara Ioanes

The Acorn is published by WPCA and delivered free of charge to WPCA members and others in the Woodley Park community.

We welcome your comments, suggestions and submissions.

Contact us :: wpcadc@aol.com

Website :: www.wpcaonline.org

*A special thanks to
Stanford University
and All Souls Church
for allowing WPCA to use their
facilities for meetings and other
activities in recent months.*

WPCA Executive Committee Opposes X3 Bus Service Reductions

WMATA is looking to eliminate the X3 rush hour metrobus, one of only two buses that serves the Woodley Park community east to west. After listening to the concerns of several neighbors the WPCA Executive Committee opposed this reduction in service. The Committee identified the following negative impacts to our children:

1. Many of the Woodley Park children ride the bus to either Wilson High School or Deal Middle School. The morning bus is often full, necessitating the need for a second bus to transport the children to school in a timely fashion.
2. Should the X3 be eliminated, students would need to wait at least another 15 minutes for the next bus to arrive. Assuming it arrives on schedule, students still have no way of knowing whether the bus is full and they would have to wait on the next bus, resulting in being late to school.
3. DCPS dismisses students at 3:15 pm, an off-peak hour. According to the proposed schedule, students would have to wait an additional 30 minutes for a bus, should they miss one or if it fills up.
4. The change in the feeder school pattern means that students east of Connecticut Avenue will not attend Alice Deal Middle School, but rather Hardy Middle School. Thus the congestion will be compounded by the fact that many of these students ride the L1 or L2. Their commute will now take them across the Woodley Park community to Wisconsin Avenue, adding to the bus congestion during school opening and closing hours.
5. Several independent schools are also present in the neighborhood – Maret, Washington International, National Cathedral School and St. Albans School. Students and faculty alike commute to these institutions, utilizing the metro and bus systems. Eliminating the X3 also affects their commute.

Stephanie Zobay

Welcome and Farewell to Neighborhood Eateries

Three new eateries opened in Woodley Park, and four closed.

Located across from the Zoo entrance, *Baked by Yael*, owned by Yael Krigman, owned bakery specializing in cakepops, rugelach, hand-rolled bagels and other delicious goodies. Yael's cakepops are a favorite for children's parties. Deliveries and catering are available. For more information, visit www.bakedbyyael.com.

Murphy's, a fun Irish pub on 24th St, closed after almost 30 years in Woodley Park. Murphy's was a true neighborhood bar and is greatly missed by many residents.

Bar Civita remodeled the Murphy's space and opened in the spring. It's a chef-owned restaurant, utilizing Chef Liam Civita's Italian-influenced regional American fare, specializing in homemade pastas, cheese and breads. Bar Civita is open for lunch and dinner, Sunday brunch and Happy Hour. Its menu can be found at www.barcivita.com.

Frozen-Yo, across from the Zoo entrance, has also closed, much to the disappointment of so many children and adults as well.

Pasta Italiana closed recently and the space is still vacant.

A review of *Macintyre's*, a new sports bar on Connecticut Ave that moved into the *Taste of India* space, is on page 7.

We welcome our new establishments into Woodley Park and wish our best to those that closed.

Barbara Ioanes

Compromise Reached on Alcohol License



In the Spring, WPCA held a special meeting of its membership to consider a request to extend alcohol hours for District Kitchen. The membership voted to oppose the evening hours extension, but had no opposition to the change in morning hours. After some negotiation with District Kitchen and ANC3C, an agreement was reached where a slight extension of evening service hours was approved by ABRA. WPCA was pleased to work with the District Kitchen and ANC3C to find a solution that worked for the restaurant and the community.

Callboxes in Woodley Park

Have you noticed the deteriorating old fire and police callboxes throughout our neighborhood? You might have wondered, where did those callboxes come from?

Here is the history: Beginning in the 1890's, before Woodley Park was a reality, the fire and police departments installed cast iron callboxes around the city so that citizens could report fires and police could communicate with each other. First they were powered by gas. By the 1930's, they were powered by electricity. By the 1970's, they were obsolete.

The call boxes remained functionless on our street corners until 2000, when Cultural Tourism DC began ART ON CALL, a project created to use the callboxes to bring art and history to neighborhoods. The Woodley Park Community Association participated in this program by restoring the callboxes as an art and history project. The boxes were refurbished and painted. Woodley Park's unique history is told with stories and pictures in each box.

Time has once again taken its toll. The once attractive monuments have fallen into disrepair. They have, unfortunately become somewhat of an eyesore. The WPCA is undertaking the task of bringing the boxes back to their 2000 glory. The work will not be cheap. It will take around \$14,000 to refurbish all eight boxes. We are starting a fundraising campaign and we will be asking your help to remake the callboxes into attractive monuments to the history of our neighborhood.

The next time you are taking a walk in the neighborhood, check out the callboxes. They can be found at:

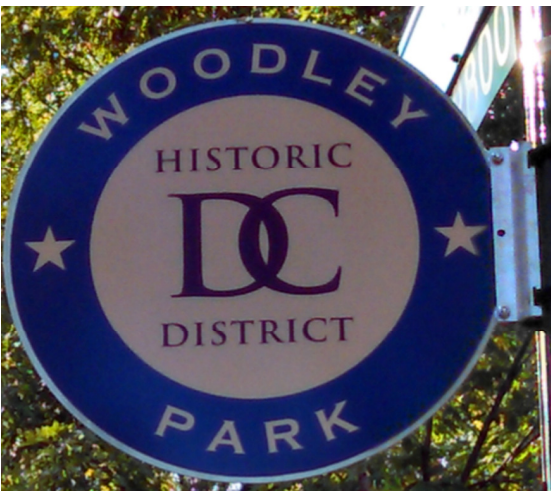
- 2500 block of Woodley Road
- 27th Street and Woodley Road
- 28th Street and Woodley Road
- 2600 Garfield Street
- 2800 28th Street
- 3100 Cathedral Avenue
- 3000 Connecticut Avenue
- 29th Street and Cortland Place

For more information, comments or donations, contact: Judy Waxman at judywaxman2913@gmail.com.

Judy Waxman



Woodley Park Historic District Design Guidelines



WPCA formed a committee to address the design guidelines for the Woodley Park Historic District. The Historic District is roughly bounded by Rock Creek Park, 24th Street, 29th Streets, Woodley Road and Cathedral Avenue (a map is on the website). The committee decided our guidelines for the fronts of homes are working well. However, regarding the rears of homes, our guidelines give the wrong message to homeowners, indicating they may do what they want in the rears. However, the historic preservation rules do apply to the rears, and proposed changes to them can be inconsistent with those rules. The committee is in the process of revising our guidelines to address the rears so that our guidelines won't be misleading. Neighbors in the Historic District will have an opportunity to review the updated guidelines and suggest changes. For more information, contact Barbara Ioanes at bioanes@gmail.com.

Barbara Ioanes

It Takes a Village

"I love people", Mark Ohnmacht passionately confessed. As a man who exudes joy and embraces life, relationships and opportunities, Ohnmacht is in his element as the new Executive Director for the Cleveland & Woodley Park Village ("The Village"). Ohnmacht loves Woodley Park too. He landed in the District as a Catholic University college student and has called it home ever since. Ohnmacht is a brilliant businessman who operates from the heart.

Although the Cleveland & Woodley Park Village is, in a sense, a virtual village, its heartbeat comes from a genuine sense of community. It is one of eight villages in the District and 30 in the greater Washington area. The Village is an authentic community comprised of senior members who need practical non-medical services connected with volunteers that provide it. Ohnmacht, supported by a part-time assistant, Chris Covell, leads The Village in building up membership, drawing in volunteers and connecting them so both benefit.

Ohnmacht recognizes that people of all ages hunger for authentic relationships and experiences — even more so as we age. "Seniors care less and less about material things and realize the value of relationships and experiences," he stated. The Village is an avenue to make that happen.

The Village membership roster includes approximately 100 neighbors ranging from their 50's-90's and with diverse motivation for participation. Some members moved to Woodley or Cleveland Parks to live with or in proximity to their adult children are simply seeking local friendships. Other locals aging in place join The Village in search of periodic assistance, connectivity or company. Others join to establish the availability of service, but do not have the need to use it yet.

The Village is about 150 volunteers strong and growing, thanks, in part, to extreme flexibility and unlimited opportunities. Volunteers are at different ages and stages of life, from teenagers learning the value of establishing community, to business professionals squeezing in time to give back and retirees wanting to remain locally engaged.

In a non-stop city where work competes to dominate life, volunteers are finding freedom and ease in the ability to custom design the type and frequency of service. Most engagements are in bite-size one-hour increments with a minimal monthly commitment. Run an errand? Rake leaves? Visit a member? Provide a ride? Both members and volunteers can initiate other ideas. Play music together? Bake brownies? "Volunteers are not limited to the 87 ideas on the application", Ohnmacht stated, "The opportunities are infinite".

The Village also fosters social engagements among members including a series of drawing classes, a board and card game event and a monthly lunch outing. At a recent outing, a member injured her finger and was escorted to the hospital by Ohnmacht himself. The Village also began a monthly service theme, which in February was I-o-v-e. On Valentine's eve, volunteers visited each member and delivered love (the neighborly kind) and Kisses (the Hershey kind).

To successfully manage the administrative side of The Village, Ohnmacht leverages volunteers' talents. For example, the polished and informative website (<http://www.clevelandwoodleyparkvillage.org/>) was created pro bono by a local design firm. Other volunteers make phone calls or organize events. Others enter and track data, though The Village has outgrown its world of spreadsheets and hopes a database expert will soon volunteer both software and services.

Ohnmacht has been busy strategizing on expansion of membership and volunteerism. For now, The Village is meeting demand for services and continues to grow, being mindful of reaching a saturation point. Growth has been gradual with a series of mini marketing pushes including on-site condominium "Get to Know The Village" nights, most recently at the Kennedy-Warren.

The Village's growth can be primarily attributed to raising awareness by word of mouth, as the benefits for members and volunteers are palpable. Members build friendships among each other and with volunteers, practical needs are met, neighbors meet neighbors and true community arises.

When asked how The Village succeeds when urbanites tend to cling to anonymity yet crave community, Ohnmacht, a music and theater aficionado, responded, "It's a dance". The Village breaks down invisible walls, seniors begin to acknowledge that they can graciously accept help and volunteers acknowledge their own needs for connectivity.

Despite seemingly 24-7 Village demands as well as responsibilities as a choir director and organist, Ohnmacht manages to get eight hours of sleep nightly. He travels periodically for festivals and events but wherever he goes, "It always feels good coming home". As a Woodley Park resident for 23 years, Ohnmacht plans to eventually move from volunteer to member status at The Village as he too ages in place. "Why retire any place else?" Ohnmacht shared about living and loving life in the District, "The world is my oyster."

Annie Glenn

New School Boundaries: Alice Deal No Longer an Option

DCPS has changed the school boundaries for Woodley Park residents beginning this school year.

Woodley Park students who are in-boundary to attend John Eaton Elementary School will attend Hardy Middle School and continue on to Woodrow Wilson High School. Alice Deal is no longer their in-boundary middle school.

Woodley Park students who are in-boundary to attend Oyster-Adams also will still continue on to Wilson High. For those students not wishing to attend Oyster-Adams after fifth grade, they now will attend their alternative in-boundary School Without Walls at Francis-Stevens, continuing to Wilson High School. Alice Deal is no longer their in-boundary middle school.

Students in-boundary for Oyster-Adams who do not want to attend the bi-lingual school will attend their alternative in-boundary school, School Without Walls at Francis-Stevens, and continue into Wilson High School.

Please refer to the DCPS website for more information.

Barbara Ioanes

Woodley Park Walks with Pope Francis

In September, Washington, DC, played host to Pope Francis, the spiritual leader of the Catholic Church. National preparations for his visit included concerts at the Kennedy Center, a formal reception at the White House and an address to Congress. To prepare for the papal visit, Cardinal Wuerl asked Washingtonians to pledge to "Walk with Francis" in a spirit of solidarity with the intentions of the Holy Father's visit. To "Walk With Francis" Catholics and non-Catholics alike were asked to volunteer to serve others, to pray for peace and to speak out for

ing the various types of community service it does as part of the Archdiocesan "YouServe" video contest. The video highlighted the service that the community does with Iona Senior Services, So Others May Eat, L'Arche, Children's Inn of DC, Spanish Catholic Center and Catholic Charities. The video was also an invitation for others to help serve.

To benefit the less fortunate, the Parish did two different drives. The first was a food drive to benefit the hungry. Collected over two weeks, the parish had over 400 bags of food for the hun-

drive for socks for Catholic Charities. At any given night, Catholic Charities is providing emergency shelter for over 1,000 men women and children. Often times these men, women and children have been on their feet and walking for a while, but lack clean socks. This creates a number of different problems for the homeless including hallux abductovalgus (bunions), hammertoes, pedal exostosis and various boney prominences become irritated by friction. The socks help to address these problems and decrease these problems. The church collected 333 pairs of new white socks for the clients of Catholic Charities!

Members from the Parish were able to encounter the Pope in a couple of different ways. Members of the St. Thomas Apostle Young Adults were invited to Joint Base Andrews to greet the Pope, along with Cardinal Wuerl, President Obama and Vice-President Biden. Other members of the parish were present on the grounds of the White House while President Obama formally welcomed the Pope to the United States and watched the parade down Pennsylvania Avenue. Other members of the parish were able to attend the outdoor Mass at Catholic University of America where the Pope canonized Junipero Serra, one of the founders of present day California. Still others were able to see the Holy Father as he departed from DC to go to the Great State of New York.

Given the close proximity to the Vatican Embassy, several of our neighbors reported seeing the Papal Fiat zipping around the neighborhood.

Peter Brusoe



those who have been marginalized. Woodley Park's St. Thomas Apostle Parish "walked with Francis" in a number of different ways including making a video, collecting food, collecting socks and encountering the Holy Father in a number of different ways.

The Parish created a video highlight-

gry. Items donated included peanut butter, hearty soups, whole wheat cereals and other staples. Someone even donated some matzo! So much food was collected that the space by St. Anthony's Altar was not large enough and the choir staging area had to be taken over to store the food. The Parish also did a

Great Things Happening to Woodley Park Priests

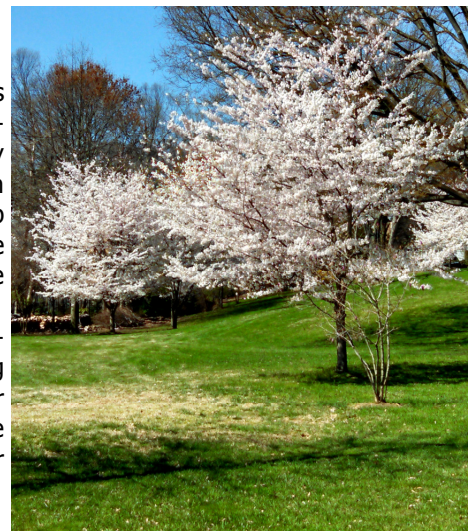
St. Thomas Apostle Parish has had some really great news lately.

Monsignor Andrew Wadsworth celebrated 25 years of service as a Catholic priest on September 30. The church held a special mass after a solemn mass in honor of St. Jerome, the patron saint of translators and biblical scholars. In addition to serving as a priest for St. Thomas Apostle, Fr. Wadsworth also serves as the Executive Director for the International Commission of English in the liturgy, a Vatican commission that is responsible for the translation of texts into English.

Fr. Mario Dorsonville who was a resi-

dent priest for many years at St. Thomas Apostle while running the Spanish Catholic Center was named as an auxiliary Bishop for the Archdiocese of Washington by Pope Francis. In this new role Bishop Dorsonville helps to minister and guide the more than 600,000 Catholics in the Archdiocese of Washington.

Fr. John Kartje, PhD, who was a resident priest and chaplain to the young adult community, was named Rector or President of Mundelein Seminary at the University of Saint Mary of the Lake for the Archdiocese of Chicago.



Tree To Be Dedicated in Honor of Armen Tashdian

The passing of Armen Tashdian has been a loss that is still felt within the WPCA. Armen was a tireless worker for the neighborhood and ensured that the regular business of the Association was conducted and conducted well. To honor Armen and his service to the association, several WPCA Executive Committee members worked with Tregaron Conservancy to have a tree planted in his honor. Just as Armen's service touched each of us and improved our community for years to come, so too will this tree. An unveiling of the plaque will be scheduled in November, and all are welcome to attend.

Saying Goodbye to Jett Debrow

2800 Woodley Road Apartments recently lost a good friend, Ms. Jett Debrow. Jett served as the property manager for 2800 Woodley Road for decades. In this role, Jett welcomed new neighbors to the community, extolling the values and virtues of living in Woodley Park. Many neighbors remember with fond delight when Jett's 2800 holiday parties with her awesome deviled eggs and where she ensured that a special guest in a red suit came to visit all of the good boys and girls. She also made sure that every staff member had a bonus from the community. On the Fourth of July, Jett could be found on the roof shaking people's hands and welcoming them to the rooftops to enjoy the day. Jett was an amazing lady and a wonderful person to know. We all miss her.

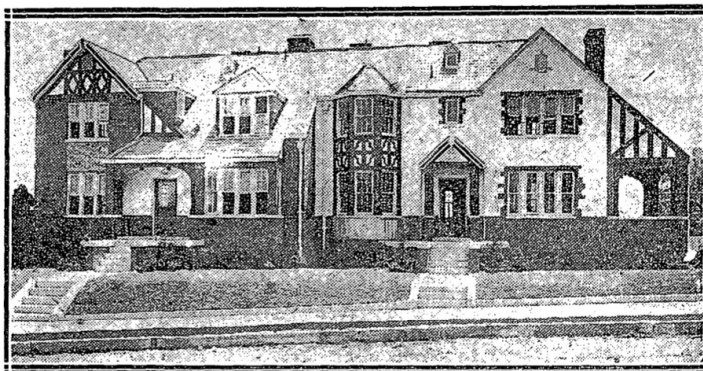


From 1928...

Every Home Is Distinctive

in

Woodley Park



Sample House—2920 28th Street

Have you visited this charming in-town subdivision? It is only one block west of Connecticut avenue, at Cathedral avenue—the Woodley road bus skirts it, the cars are two blocks away. You will find its homes the most up-to-date and livable in the city.

Its LOCATION places it foremost as a sure and profitable investment; the best possible methods of CONSTRUCTION assure you of the stability and duration of the houses! their BEAUTY and VARIETY of DESIGN meet the tastes and preferences of every individual.

The PRICES are, in every case, REASONABLE—the TERMS attractive.

INVESTIGATE FOR YOURSELF

The houses are open and invite your inspection.

SAMPLE HOUSE OPEN TILL 9 P. M.

WARDMAN

1437 K Street N.W.

Main 3830

:: MEMBERSHIP REGISTRATION FORM ::

NAME:: _____

STREET ADDRESS:: _____

E-MAIL:: (Including your e-mail address will allow us to send you meeting notices and periodic updates.) _____

AREAS OF INTEREST/CONCERN:: _____

SIGNATURE:: _____ DATE:: _____

Contribution :: ☐ \$15 ☐ \$25 ☐ \$50 ☐ \$100 ☐ Other

WPCA membership is free of charge, but we seek contributions to cover expenses.

WPCA is a 501(c)(3) non-profit organization; contributions are tax deductible to the extent permitted by law. Please mail your completed **Membership Registration Form** to:

WPCA MEMBERSHIP DESK, P.O. Box 4852, WASHINGTON, D.C. 20008

Checks should be made to Woodley Park Community Association.

You can also join, renew and contribute online: www.wpcaonline.org/join

Honoring the Brave Officers of the Second District MPD

In September, the Second District Citizens' Advisory Council held the annual awards dinner for staff of the Second District. The WPCA was well represented along with our friends from the Cleveland Park Citizens Association. WPCA purchased an ad, as well as paying for two police officers to attend the event. Peter Brusoe, Bill Menczer and Dan Dembkowski attended and represented the Association.

The officer of the year for our PSA was Officer Michael Tong. Officer Tong works the overnight shift for MPD. He recently joined the force having finished a Master's degree from CUNY's John Jay College, and the SUNY Center at Buffalo.

Officer Bob Fennel was given the patrol officer of the year award by the second district. Officer Bob frequently patrols our neighborhood.

Michael Reese, the previous Commander of the Second District, was honored for his leadership and service with an award.

Mayor Bowser, Councilmembers Mary Cheh and Brandon Todd all thanked the police for their hard work and dedication

to the community. We look forward to having many more positive interactions with the police in the years to come.



WPCA Board members with the honorees.



Happy shoppers at the Cathedral-Woodley alley sale.

Reinvigorate the Neighborhood Watch

We have seen an increase in crime in the District of Columbia. With the spike in crime, the WPCA wants to ensure that we are doing everything that we can to protect and safeguard our community and neighbors. As part of that we want to reinvigorate the Neighborhood Watch.

To make this successful we will need to have at least one person per block volunteer to be a point of contact, and two or three people per apartment building. That person will receive emails and other information about crime, as well as passing out needed information on the community.

If you are able to help out please contact Peter Brusoe at pwbrusoe@gmail.com.

Macintyre's Fantastic Food & Atmosphere

Woodley Park has recently welcomed a great new neighbor to our business district, Macintyre's. Located in the old Taste of India location, this restaurant is the perfect spot for a lunch with friends or watching a good football game.

The restaurant's décor is bright and open. The wood paneling is complemented by a variety of paintings that evoke the capital city. The tables are nicely spaced apart and comfortable with the level of noise being lively, but not overly loud.

The first thing that strikes you as you enter this restaurant is how happy and pleasant everyone is -- from the hostess who brings you to your table, to the staffer who brings

you your cup of water, to the cheerful waiter who goes over the day's specials and what is currently on tap.

The menu provides a range of snacks and full entrees for every palate. The Classic Burger was outstanding. Served medium well, the meat complemented the crisp lettuce and tomato in a wonderful way. The brioche bun was the perfect combination of firm and soft and absorbed the flavor from the hamburger patty, cheese and lettuce. While I did not opt to add the bacon or egg those were also options. My dining companion enjoyed a delicious Caesar salad. The lettuce was crisp, with enough cheese and dressing to nicely complement the salad, while not overpowering it. She opted not to have the anchovies on the salad.

The beverage selection is outstanding for those who appreciate craft beers. A wide variety of beverages are available and at reasonable prices.

Peter Brusoe

ARE YOU A WPCA Member?

This newsletter goes Woodley Park residents, whether or not they are members of WPCA.

Your membership status is indicated in the address box to the right, with WPCA members seeing their membership expiration date.

If your date has passed, you can use the Membership Form on page 6 to renew.

If you're not a member, please consider joining.

You can also join or renew online: www.wpcaonline.org/Join

WPCA, P.O. Box 4852, WASHINGTON, D.C. 20008



The Pursuit of Happiness at Stanford

If the watercolors on exhibit at the Stanford art gallery are any indication, Arnaud Faugas' pursuit has been a success. The pictures celebrate his home region of Bordeaux, Paris and, of course, French wines.

Mr. Faugas did not start out to be an artist. He came to it after ten years of exploring the world, including China and the US. In fact, he has a particular fondness for this country and its history, and the exhibition includes depictions of such varied Americans as Washington, Lincoln and Ella Fitzgerald.

Thomas Jefferson is a particular favorite of the artist. This is perhaps because the Virginian shared his interest in and love of wine. Jefferson had tried to establish a vineyard at Monticello, but the British destroyed the vines during the Revolution. When Jefferson was in France in 1787, he visited Bordeaux and other wine regions and sampled their output.

This is Mr. Faugas first exhibition in the United States (it runs through December 31). I suspect it won't be his last.

John Goodman